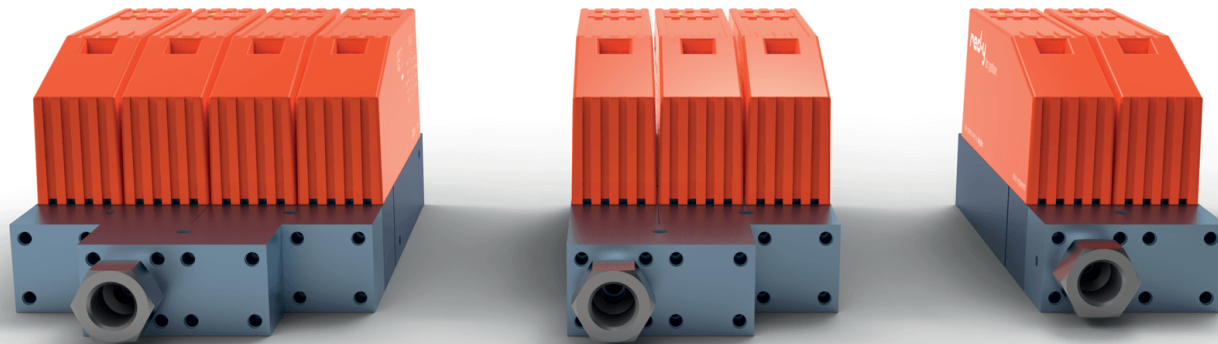
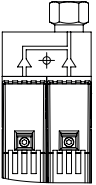
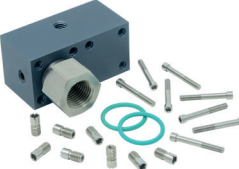

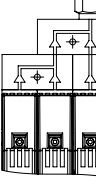
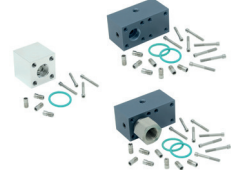
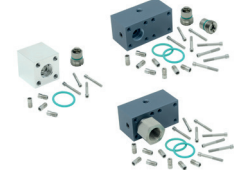
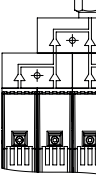
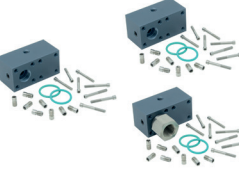
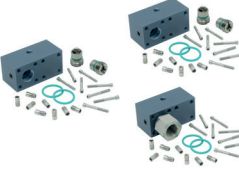


Gas block systems for red-y smart series

Vögtlin's modular gas collection systems enable the easy integration of several digital flow meters and flow controllers of the red-y smart series into one combined system. Blocks with or without non-return valves are available.

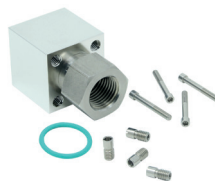


Versions with G $\frac{1}{4}$ " female thread, aluminium, seals material FKM*
 Delivery incl. mounting screws, seals and connecting nipple G $\frac{1}{4}$ " (at the outlet)
 Specification of non-return valve: Flow rate 60 l/min / Pressure drop Δp 1.2 bar / Leak rate (Helium) 1×10^{-6} mbar l/s
 The systems are available as self-assembly kit or assembled/leak tested.

	GZB Gas block system WITHOUT non-return valve	GRB Gas block system WITH non-return valve
	<p>Article-N° 327-6051 GZB21 2 Inputs - 1 Output Dimensions (L x W x H): 50 x 25 x 25mm</p> 	<p>Article-N° 327-6054 GRB21 2 Inputs - 1 Output Dimensions (L x W x H): 50 x 25 x 25mm</p> 
	<p>Article-N° 327-6052 GZB31 3 Inputs - 1 Output Dimensions (L x W x H): 75 x 50 x 25mm</p> 	<p>Article-N° 327-6055 GRB31 3 Inputs - 1 Output Dimensions (L x W x H): 75 x 50 x 25mm</p> 
	<p>Article-N° 327-6053 GZB41 4 Inputs - 1 Output Dimensions (L x W x H): 100 x 50 x 25mm</p> 	<p>Article-N° 327-6056 GRB41 4 Inputs - 1 Output Dimensions (L x W x H): 100 x 50 x 25mm</p> 

Single block stainless steel (straight-way block) G $\frac{1}{4}$ " female thread, stainless steel, seals material FKM

Article-N° 327-6150
GZB11
 without non-return valve
 (distance piece)
 Dimensions (L x W x H):
 25 x 25 x 25mm



Article-N° 327-6154
GRB11
 with non-return valve
 Dimensions (L x W x H):
 25 x 25 x 25mm



*Optional: G $\frac{1}{8}$ " female thread for outlet, seals material EPDM
 Gas collection blocks with more than 4 channels and spare parts on request

