

red-y smart series mass flow meters & controllers with built-in display

Our proven thermal mass flow meters and controllers of the *red-y smart series* are available with integrated display. The display indicates flow rate, total and measuring units.

With the controller version with this clear display, you can add the option of using a local setpoint to set the required flow.



Fig.1 Display SPOT with default parameters



Fig.2 Display SETSPOT with default parameters and +/- buttons to adjust the setpoint

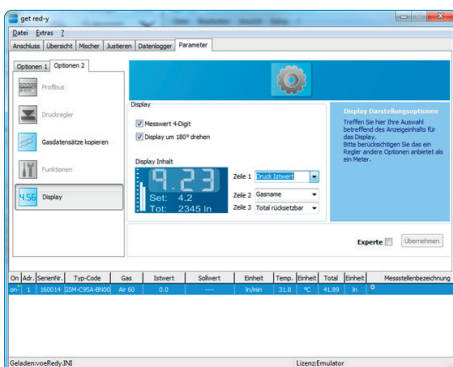


Fig.3 get red-y software: Adjustment of display settings

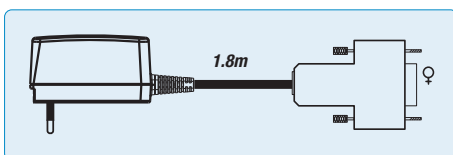


Fig.4 Plug-type power supply device for one red-y smart with display option

Display options SPOT & SETSPOT

The display indicates various parameters: Flow rate, measuring units, total, gas type, setpoint* and valve load*. A bar graph on the left side indicates the actual flow in relation to the full scale. A + and – button allows to set a setpoint*.

Default parameters

- » **smart meter (GSM):** Flow rate, measuring units, total, gas type
- » **smart controller (GSC):** flow rate, measuring units, set point, gas type
- » **smart pressure controller (GSP/GSB):** Pressure rate, pressure setpoint, flow rate, measuring units

Available versions

- » **SPOT:** Display
- » **SETSPOT:** Display & setpoint setting*

Adjust display settings

Do you want to change the measuring unit or do you want the device to indicate the gas type instead of the total? No problem. With the free *get red-y software* you can easily adjust the display settings with just a few mouse clicks. The following settings can be changed:

- » Display the flow rate in 3 or 4 digit
- » Change the display orientation (180°)
- » Change parameters & units

Option

Plug-type power supply device for direct feeding of one *red-y smart* with display option (read-out/operation via display function only)

Input: 100 – 240Vac, 50 – 60Hz

Output: 24Vdc, approx. 0.5A (12W), D-Sub connector

EURO Plug: Art-N° 328-2321, US Plug: Art-N° 328-2322,

UK Plug: Art-N° 328-2323, AU/NZ Plug: Art-N° 328-2324,

CN Plug: Art-N° 328-2325

*available for smart controller & smart pressure controller

