

# Software get red-y (version 5)

Efficient device management for the thermal mass flow meters & controllers of the red-y smart series

With the **free get red-y software**, users now have **PC access to all connected Vögtlin measuring and control devices**. Beside displaying key information, users can also view and modify various operating parameters.

Thanks to intelligent device monitoring, the software is a perfect service and analysis tool, e.g. to check and adjust settings.



Fig.1 The software **get red-y 5** communicates via a USB cable with a **red-y smart** mass flow controller

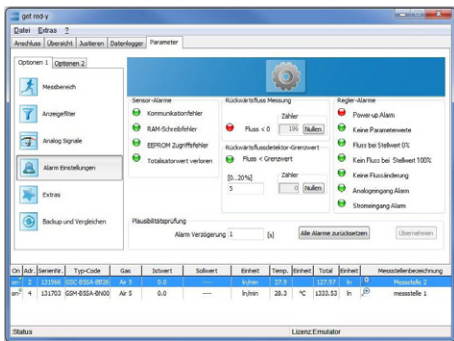


Fig.2 Tab with information on the operating state

Download the free get red-y software:  
[www.voegtlin.com/en/support/download/](http://www.voegtlin.com/en/support/download/)



## Device information

- » Display all key device information, e.g. reading, temperature, total, valve voltage etc.
- » Specify a setpoint for flow and pressure controllers
- » Assign a device name, e.g. name of measuring point ID
- » Change the device address (Modbus, Profibus)
- » Visualization of measured data
- » Adjust the control speed



## Operating state monitoring

The software monitors key operating parameters and indicates irregularities such as:

- » Sensor and communication errors
- » Unusual device behavior (instability, contamination, etc.)



## Switch measurement units & gas type

- » Select the desired units of measurement
- » For devices that have been calibrated for several different gases (multigas), user can switch to different stored gas data sets



## Plug & play with USB cable

Digital communication cable USB/RS485 (PDM-U Art. 328-2169) and versatile cable accessories ensure that measurement and control devices can be operated troublefree from the PC.



## Logging, mixing & calibration module (optional)

- » Mix gases with fixed percental proportions
- » Master/Slave mixing function
- » Visualize and log all measured data
- » Export as CSV file for further use in MS Excel or similar program
- » Check for deviations in the mass flow meters and controllers



## Calibration & adjustment module (optional/including training)

The calibration module can be used to check for deviations in the *red-y smart series* mass flow meters and controllers. The supplemental adjustment module permits manual or automatic adjustment.






## System requirements

The *get red-y 5* software runs under Windows 10 & 11. For required hardware, please refer to the operating manual of the software.

➔ **Overview of the software modules on page 2**



			
Software / Modules	Basic	Logging, Mixing & Calibration Module <sup>1</sup>	Calibration & Adjustment Module <sup>1,6</sup>
<b>Function</b>			
Display device information such as reading, temperature, valve voltage	●	●	●
Totalizer	●	●	●
Specify setpoint & adjust control speed <sup>2</sup>	●	●	●
Assign device name	●	●	●
Switch units of measurement	●	●	●
Visualize & adjust PID parameters / Graphic tool	●	●	●
Operating state monitoring	●	●	●
Zoom function <sup>3</sup>	●	●	●
Switch analog signals	●	●	●
Reset totalizer	●	●	●
Save device data	●	●	●
Restore device data	5	5	●
Update device firmware	●	●	●
Setpoint delay	●	●	●
Pressure power-up setpoint	●	●	●
Adjust display filter		●	●
Set dynamic range		●	●
Set full scale of measurement range		●	●
Log measurement data		●	●
CSV export of logged measurement data		●	●
Gas mixing		●	
Verify calibration		●	●
Manual adjustment			●
Automatic adjustment <sup>4</sup>			●
<b>Pricing</b>	Free of charge	On request	On request

On request, other options may be enabled or added (e.g. for OEM applications). Please contact your sales representative for more information.

<sup>1</sup>Requires a USB dongle. Multiple modules may be combined on one USB dongle.

<sup>2</sup>Only flow and pressure controllers *red-y smart controller* & *red-y smart pressure controller*

<sup>3</sup>Magnifies screen display of momentary flow rate for all connected instruments

<sup>4</sup>Requires a *red-y smart* reference device

<sup>5</sup>Must be released by the manufacturer if < SN160.000 (smart version 6)

<sup>6</sup>Offer and sale of adjustment functionality at the sole discretion of the manufacturer. The manufacturer reserves the right to refrain from offering or selling of this feature.

**Download the latest get red-y software version:**  
[https://www.voegtlin.com/data/329-3017\\_ml\\_getredy.zip](https://www.voegtlin.com/data/329-3017_ml_getredy.zip)



**Vögtlin Instruments GmbH – gas flow technology**  
 St. Jakob-Strasse 84 | 4132 Muttenz (Switzerland)  
 Phone +41 (0)61 756 63 00 | Fax +41 (0)61 756 63 01  
[www.voegtlin.com](http://www.voegtlin.com) | [info@voegtlin.com](mailto:info@voegtlin.com)

